

CERTIFICATE OF LOCATION OF GOVERNMENT CORNER

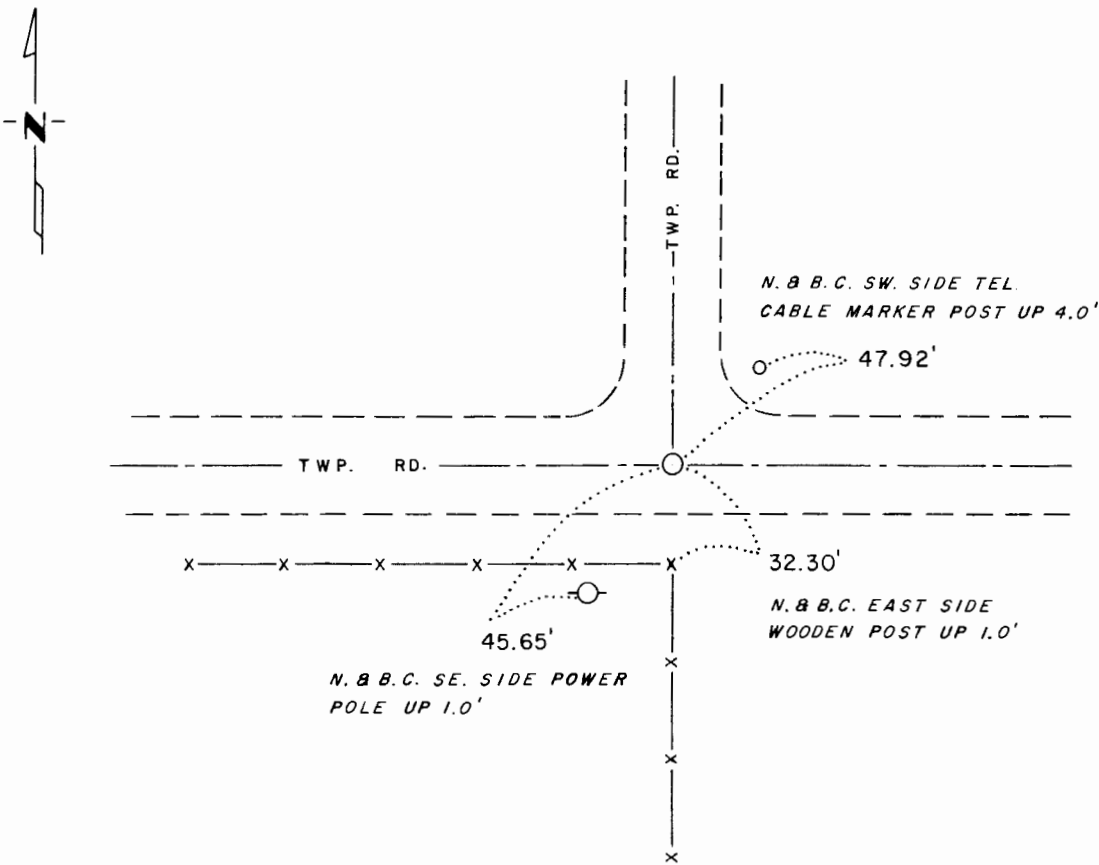
Northeast Corner of Section 4, Township 105, Range 41, 5th P.M.

STATE OF MINNESOTA, County of MURRAY

At the corner location shown on the sketch:

- On 5-24-77 found a Rotted Wood Stake Down 18" With a 12"x10"x18" Stone Over
DATE
- left monument as found, lowered monument, removed monument (explain)
- On 5-24-77 placed a 3/4" Iron Rod in Remains of Stake Down 0.4' and Placed The
DATE
Stone on The North Side of Iron

SKETCH OF REFERENCE TIES



Statement of evidence relative to this corner location is on back of page.

I hereby certify that this document and the data contained herein was prepared by me or under my direct supervision.

Sam H. Stevenson 7-3-78
SIGNATURE DATE

Registration No. 12684
 Land Surveyor, Professional Engineer
 County Surveyor, County Engineer

OFFICE OF THE REGISTER OF DEEDS
 County of _____

I hereby certify that this document was filed in the Reg. of Deeds office at _____ .M. on the _____ day of _____ A.D., 19 _____

Register of Deeds _____
 By _____, Deputy

DOCUMENT NO. _____

Statement of Evidence:

Northeast Corner Sec. 4, T 105 - R 41

Murray County

This corner was originally established by the U.S. General Land Office survey in 1861. The government notes show corner marked with a wood post set in mound of earth with pits and trench dug around the mound.

In May, 1977 the DNR Bureau of Engineering contacted the Murray County Offices of the Recorder, Auditor and Engineer for corner information.

The following information was obtained from the Engineer's office. Survey Record Book, for Sec. 34, T 106, R 41 shows J. W. Woolstencroft County Surveyor in April, 1898, found government mound and pits.

On May 24, 1977, we hired a backhoe operated by Sidney Pope of Iona to dig for evidence of this corner. We found a 5" long rotted stake down 1.5' with a 12" x 10" x 8" stone over. We set a 3/4" x 24" iron rod in the wood stake and set stone on the north side.

Picture evidence of the corner is on file with the DNR Bureau of Engineering.

SS

164271

State of Minnesota }
County of Murray, }

I hereby certify that the within instrument
was filed in this office for record on the

7th day of August A.D. 1981,

at 8:30 o'clock A. M., and was duly re-
corded as Microfilm Document No. 164271

Willard W. Ohme
County Recorder